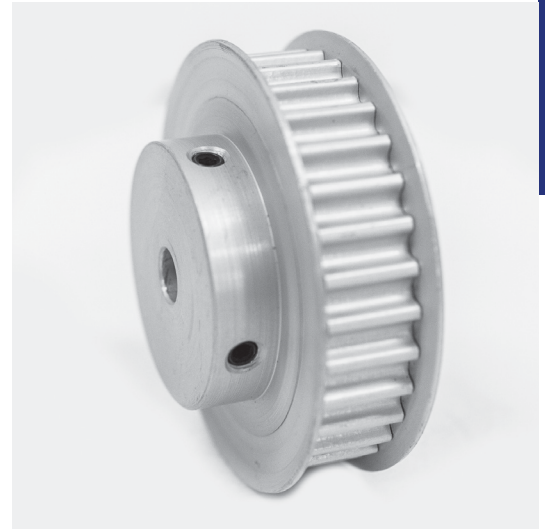


# POWERHOUSE™ TIMING PULLEYS

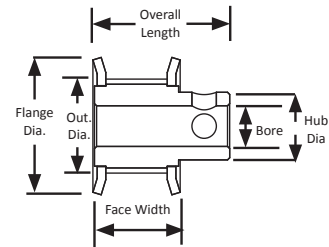
(Compatible with PowerGrip® GT2® and PowerGrip® GT3® pitches)

**5 mm Pitch  
For 9 mm Wide Belts  
Hub  
Aluminum  
Clear Anodized  
Finished Bore**

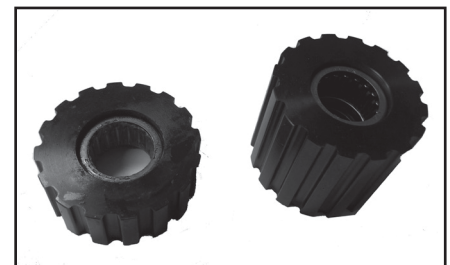
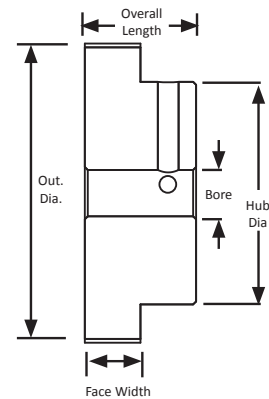


Part Number	No. of Teeth	Type	Pitch Dia. (in)	Out. Dia. (in)	Flange Dia. (in)	Bore (in)	Face Width (in)	Overall Length (in)	Hub Dia. (in)	Set Screw
12-5P09-6FA3	12	6F	0.752	0.707	0.875	0.250	0.546	0.796	0.438	1 x 8-32
13-5P09-6FA3	13	6F	0.815	0.770	0.938	0.250	0.546	0.796	0.500	1 x 8-32
14-5P09-6FA3	14	6F	0.877	0.832	1.000	0.250	0.546	0.796	0.500	2 x 8-32 @ 90°
15-5P09-6FA3	15	6F	0.940	0.895	1.063	0.250	0.546	0.796	0.563	2 x 8-32 @ 90°
16-5P09-6FA3	16	6F	1.003	0.958	1.094	0.250	0.546	0.796	0.563	2 x 8-32 @ 90°
17-5P09-6FA3	17	6F	1.065	1.020	1.188	0.250	0.546	0.796	0.625	2 x 8-32 @ 90°
18-5P09-6FA3	18	6F	1.128	1.083	1.250	0.250	0.546	0.796	0.688	2 x 8-32 @ 90°
19-5P09-6FA3	19	6F	1.191	1.146	1.313	0.250	0.546	0.796	0.750	2 x 8-32 @ 90°
20-5P09-6FA3	20	6F	1.253	1.208	1.375	0.250	0.546	0.796	0.813	2 x 8-32 @ 90°
22-5P09-6FA3	22	6F	1.379	1.334	1.500	0.250	0.546	0.796	0.938	2 x 8-32 @ 90°
24-5P09-6FA3	24	6F	1.504	1.459	1.625	0.250	0.546	0.859	1.000	2 x 8-32 @ 90°
25-5P09-6FA3	25	6F	1.566	1.521	1.688	0.250	0.546	0.859	1.000	2 x 8-32 @ 90°
26-5P09-6FA3	26	6F	1.629	1.584	1.750	0.250	0.546	0.859	1.063	2 x 8-32 @ 90°
28-5P09-6FA3	28	6F	1.754	1.709	1.875	0.250	0.546	0.859	1.188	2 x 8-32 @ 90°
30-5P09-6FA3	30	6F	1.880	1.835	2.000	0.250	0.546	0.859	1.188	2 x 8-32 @ 90°
32-5P09-6FA3	32	6F	2.005	1.960	2.125	0.250	0.546	0.859	1.250	2 x 8-32 @ 90°
34-5P09-6FA3	34	6F	2.130	2.085	2.250	0.250	0.546	0.859	1.375	2 x 8-32 @ 90°
36-5P09-6A4	36	6	2.256	2.211	-	0.313	0.546	0.937	1.500	2 x 8-32 @ 90°
38-5P09-6A4	38	6	2.381	2.336	-	0.313	0.546	0.937	1.500	2 x 8-32 @ 90°
40-5P09-6A4	40	6	2.506	2.461	-	0.313	0.546	0.937	1.500	2 x 8-32 @ 90°
44-5P09-6A4	44	6	2.757	2.712	-	0.313	0.546	0.937	1.500	2 x 8-32 @ 90°
48-5P09-6A5	48	6	3.008	2.963	-	0.375	0.546	0.937	1.500	2 x 10-32 @ 90°
50-5P09-6A5	50	6	3.133	3.088	-	0.375	0.546	0.937	1.500	2 x 10-32 @ 90°
56-5P09-6A5	56	6	3.509	3.464	-	0.375	0.546	0.937	1.500	2 x 10-32 @ 90°
60-5P09-6A5	60	6	3.760	3.715	-	0.375	0.546	0.937	1.500	2 x 10-32 @ 90°
62-5P09-6A5	62	6	3.885	3.840	-	0.375	0.546	0.937	1.500	2 x 10-32 @ 90°
70-5P09-6A5	70	6	4.386	4.341	-	0.375	0.546	0.937	1.500	2 x 10-32 @ 90°
72-5P09-6A5	72	6	4.511	4.466	-	0.375	0.546	0.937	1.500	2 x 10-32 @ 90°

**TYPE 6F**



**TYPE 6**



For idler pulleys, see page 366.